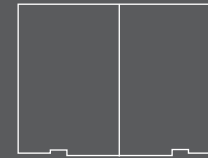
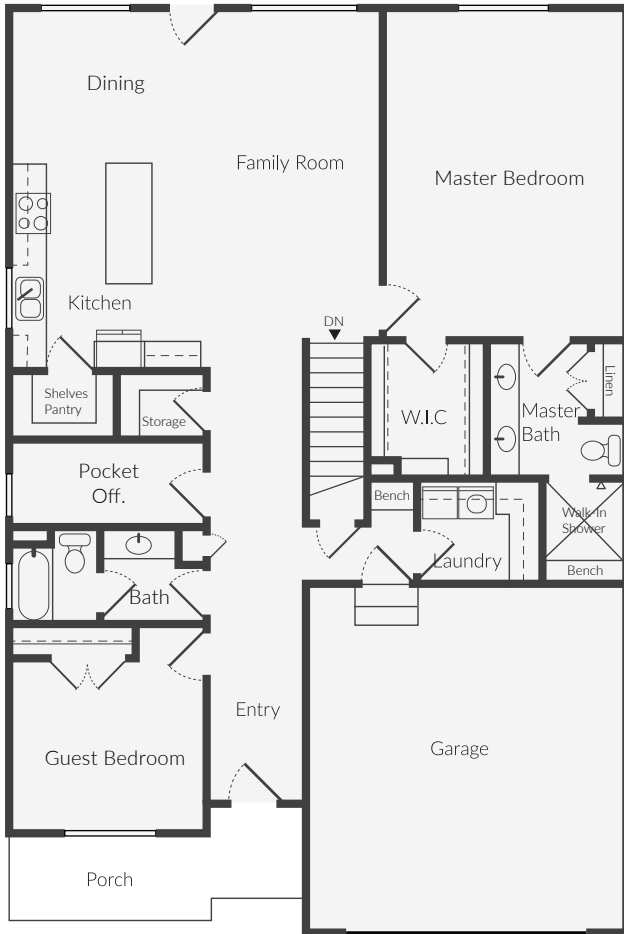


the
MIA PLAN

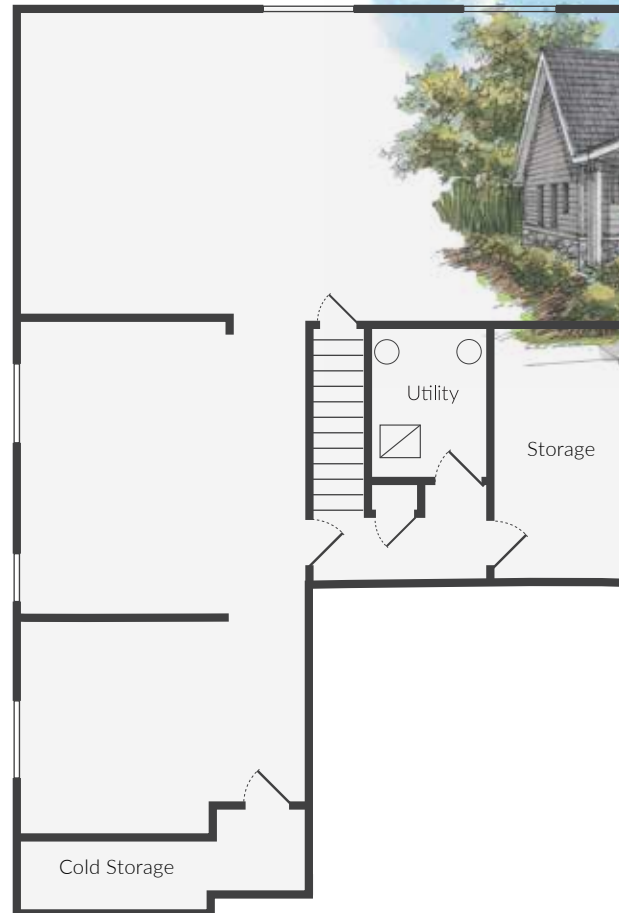


3,902 SQ. FT.
Includes Unfinished Basement

Main (1,896 sq. ft.)

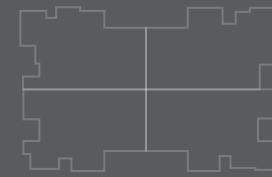


Basement (2,006 sq. ft.)

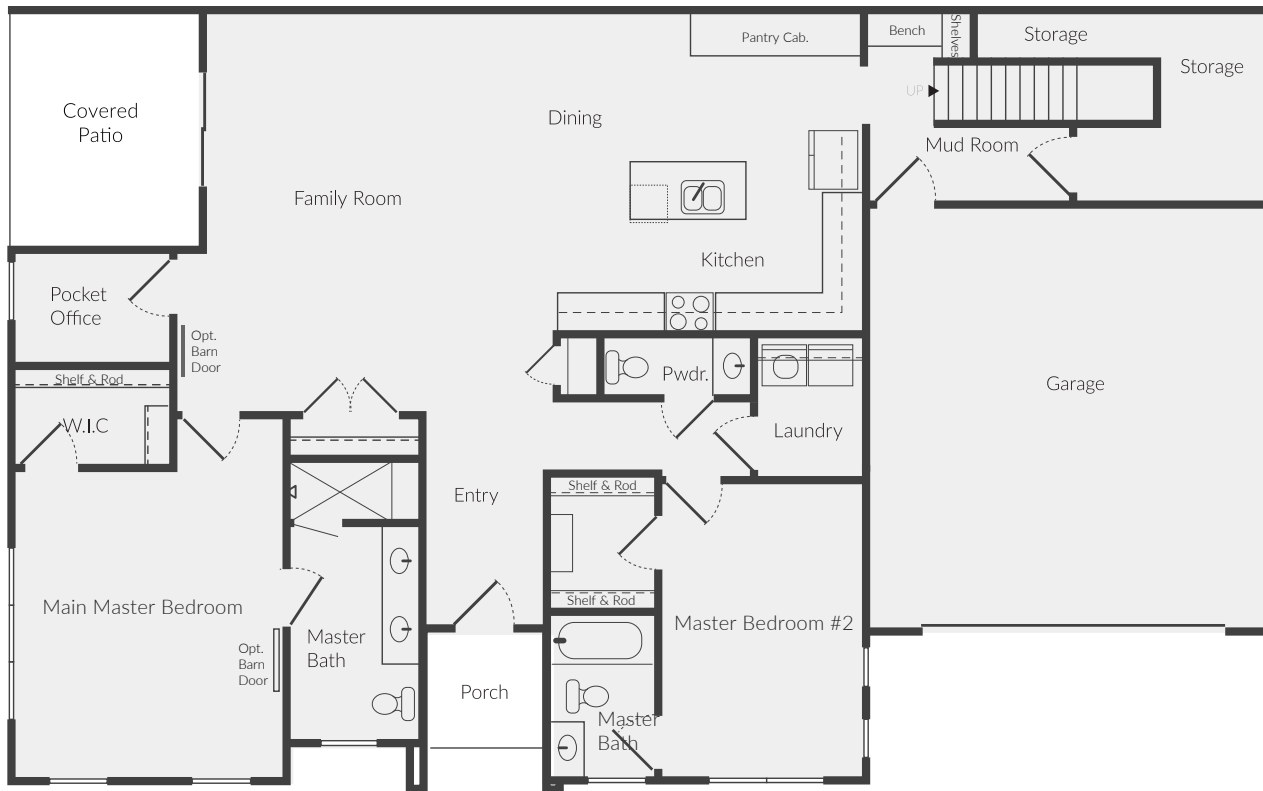


A 55+ Community
KIMBALL
Villas

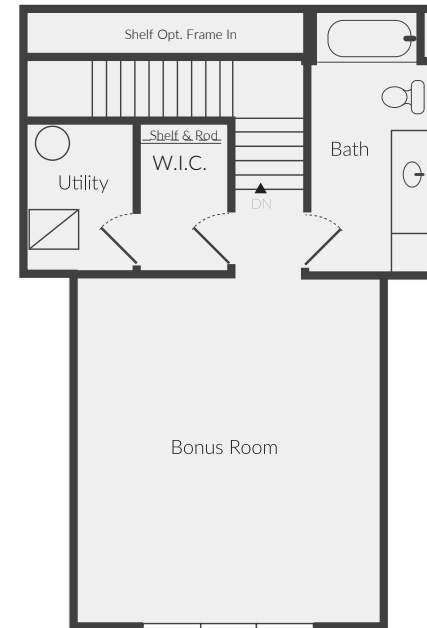
01-2023
All dimension and Square Footage are approximate. Standard Features and Design subject to change without notice. Buyer to verify all information
Renderings are for presentation purposes only and do not represent standard options, etc..



Main (1,935 sq. ft.)



Bonus (634 sq. ft.)

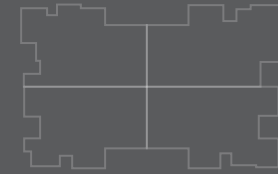


01-2023
All dimension and Square Footage are approximate. Standard Features and Design subject to change without notice. Buyer to verify all information
Renderings are for presentation purposes only and do not represent standard options, etc..

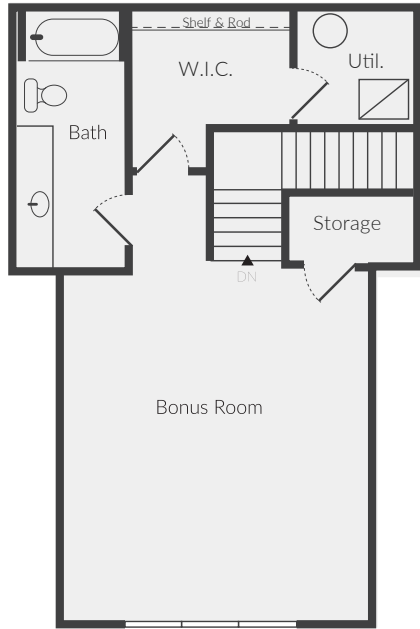


A 55+ Community
KIMBALL
Villas

the SAWYER PLAN



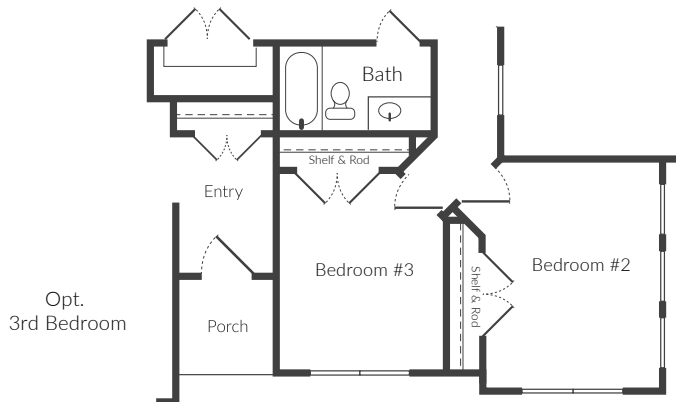
VILLAS
2,569 SQ. FT.



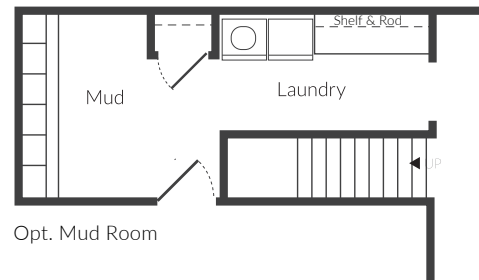
Bonus (634 sq. ft.)



Main (1,935 sq. ft.)



Opt. 3rd Bedroom



Opt. Mud Room



A 55+ Community

KIMBALL
Villas

01-2023

All dimension and Square Footage are approximate. Standard Features and Design subject to change without notice. Buyer to verify all information. Renderings are for presentation purposes only and do not represent standard options, etc..

801.913.3553

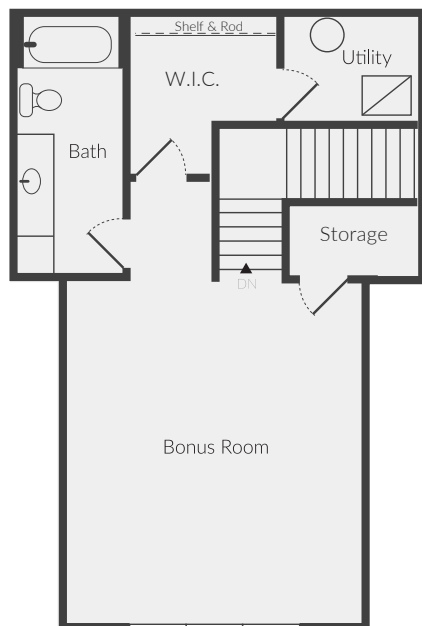
choosepeterson.com

the
SAGE PLAN

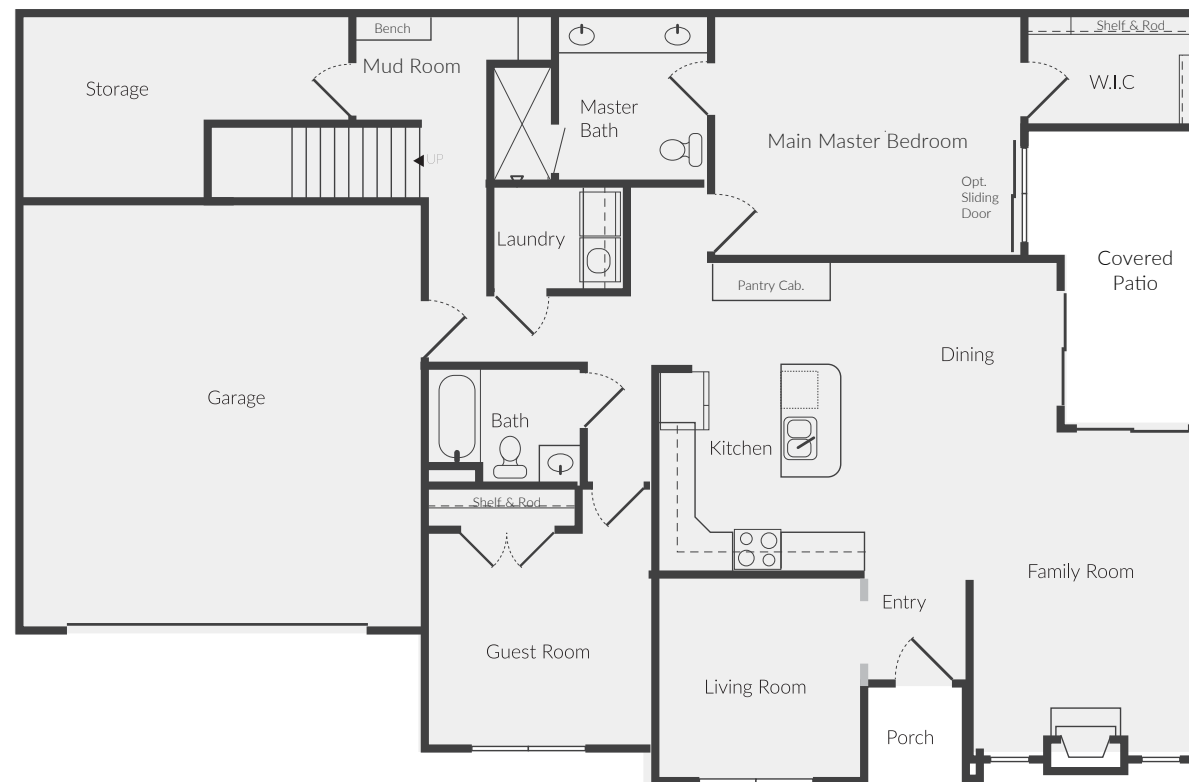


VILLAS
2,405 SQ. FT.

Bonus (634 sq. ft.)



Main (1,771 sq. ft.)



01-2023

All dimension and Square Footage are approximate. Standard Features and Design subject to change without notice. Buyer to verify all information. Renderings are for presentation purposes only and do not represent standard options, etc..



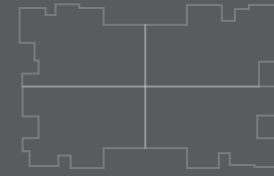
A 55+ Community

KIMBALL
Villas

801.913.3553

choosepeterson.com

the
CATE PLAN

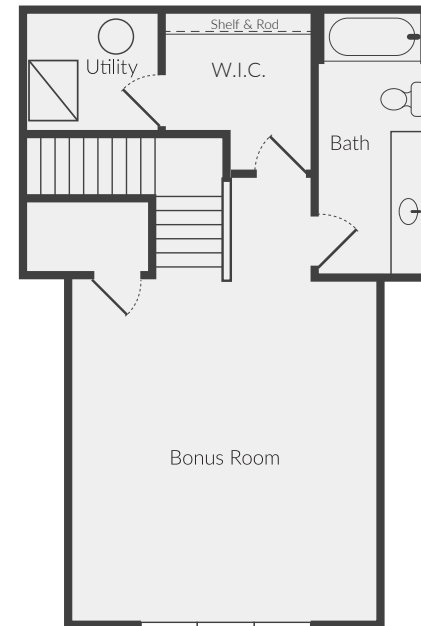


VILLAS
2,400 SQ. FT.

Main (1,766 sq. ft.)



Bonus (634 sq. ft.)



01-2023

All dimension and Square Footage are approximate. Standard Features and Design subject to change without notice. Buyer to verify all information. Renderings are for presentation purposes only and do not represent standard options, etc..



A 55+ Community
KIMBALL
Villas

801.913.3553

choosepeterson.com